



building cities
shaping lives

Coastal Engineering Survey Services



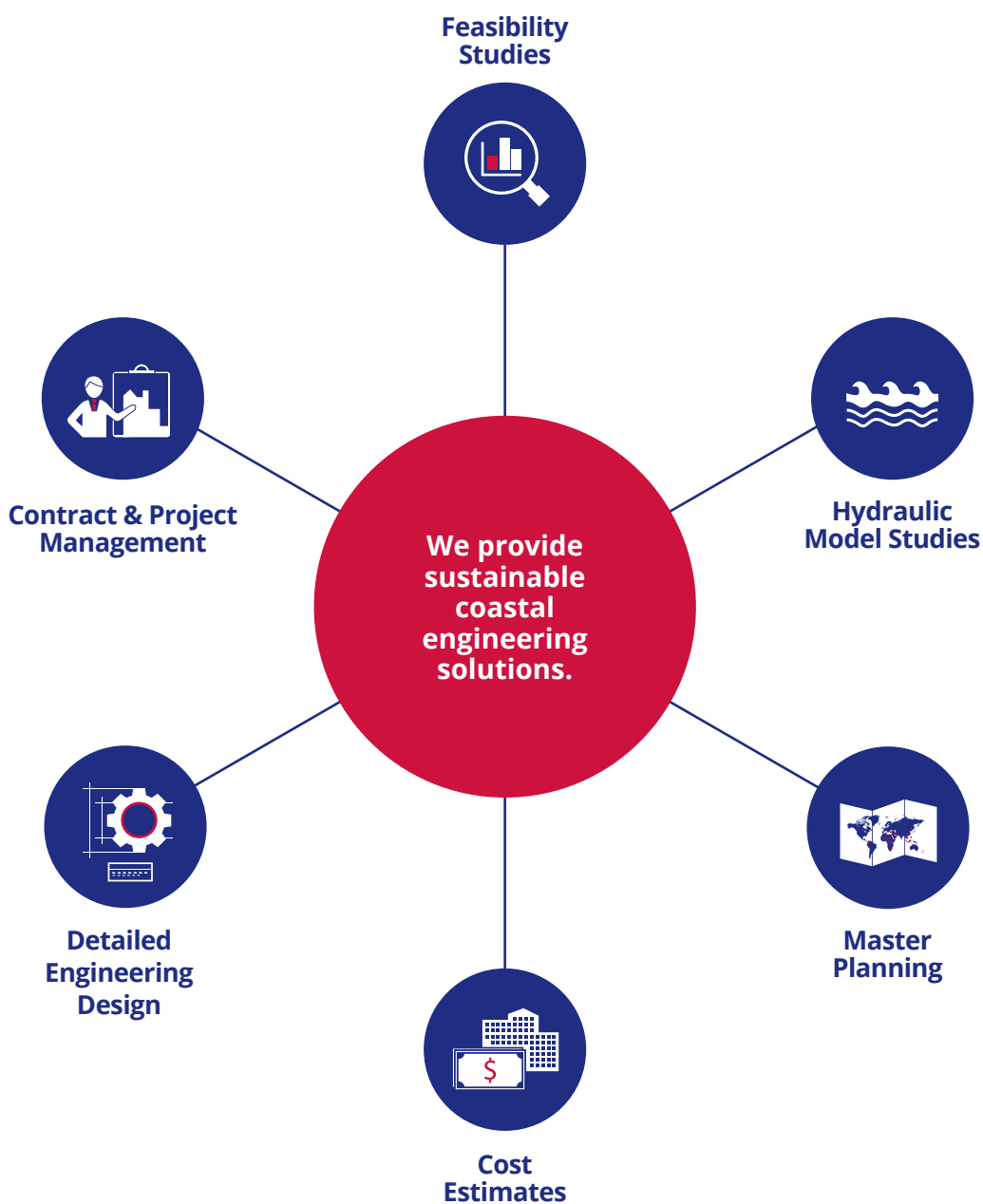
An aerial photograph showing a coastal industrial zone. In the foreground, a large body of water with a sandy beach curves along the shore. Behind the beach is a vast area of land, some of which is green and some is brown and undeveloped. In the background, there are numerous industrial structures, including large white storage tanks and various buildings. The city skyline is visible in the far distance under a hazy sky.

Engineering The Coastline

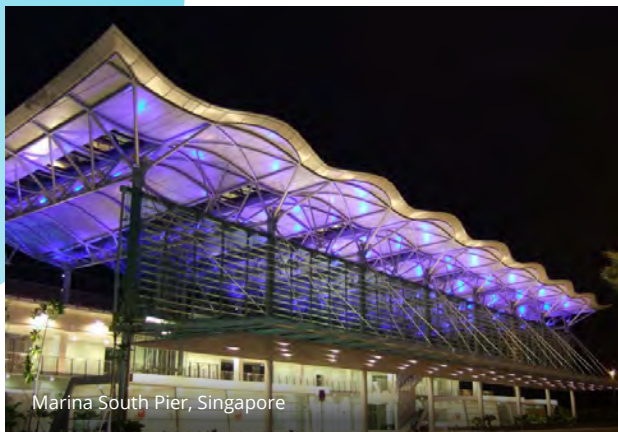
We have created world-class ports and sustainable coastal environments, sculpting shorelines and enhancing land values. Our reclamation work has shaped Singapore's shoreline significantly. For instance, the bustling Jurong Island and the idyllic Southern Islands. With port expertise stretching from the pioneer industrial Jurong Port to today's Pasir Panjang Terminal and onwards to the future port in Tuas, we have the solutions for your coastal development needs.

we are with you at every step

– creating coastlines, enhancing their value, managing the results.



our services



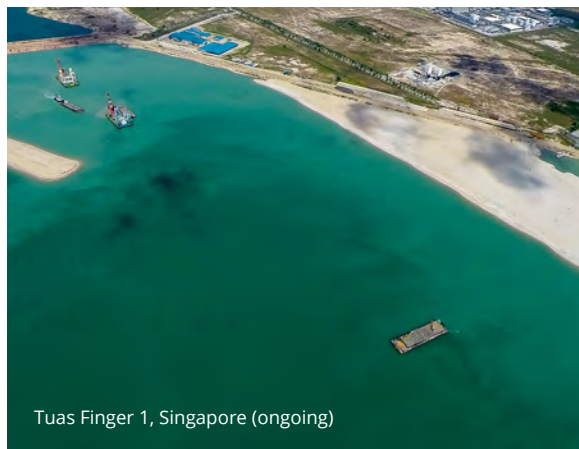
Marina South Pier, Singapore

PORT & MARINE

Our services include port and marine infrastructure, and shore protection structures such as seawalls, wharfs and jetties. We are developing Tuas Terminal Finger 1 and 2 for Singapore's consolidation of container ports to the west.



Next Generation Container Port Challenge (NGCP), Singapore



Tuas Finger 1, Singapore (ongoing)



Dredging and Reclamation Works at Western and Eastern Channel Phase 1 and 2, Brunei (ongoing)



Horizon Terminal, Singapore



Caisson Casting Yard for Tuas Finger 1 and 2, Singapore



Pasir Panjang Phases 3 and 4, Singapore



Slope Revetment for Jurong Island Westward Extension, Singapore

RECLAMATION

We raise land from the sea to realise your vision. We reclaimed 7 islands to create Jurong Island, shaping it into the world's leading petrochemical hub. We expanded the Central Business District into today's modern Marina Bay. And to top it all, we reclaimed East Coast and the Southern Islands to create more recreational spaces for people to enjoy.

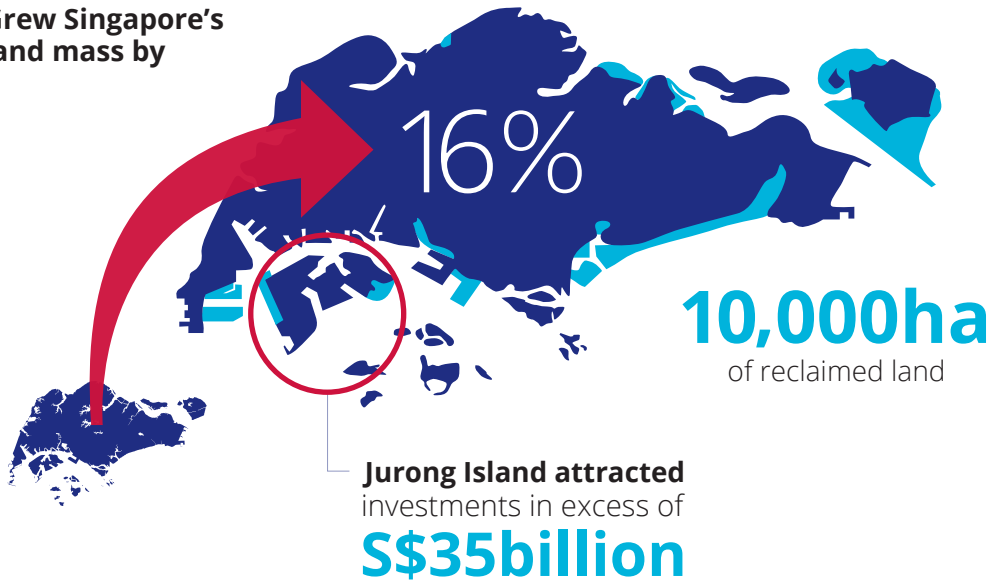
COASTAL ENVIRONMENT

Caring for coastlines is our guiding principle. We protect and restore mangroves, and guard against eroding shores. Your environmental concerns are also ours – we initiate sustainable coastal engineering solutions to exceed your needs.



our achievements

Grew Singapore's
land mass by



our testimonials



The team always has a positive 'can do' attitude. The members are pro-active and are able to anticipate problems and work out various solutions for the smooth implementation of the project.



MPA Singapore



Notwithstanding the last minute changes/inputs that may threaten to throw the team off-course, the team has been responsive to JTC's requests time and again without any complaints.



JTC

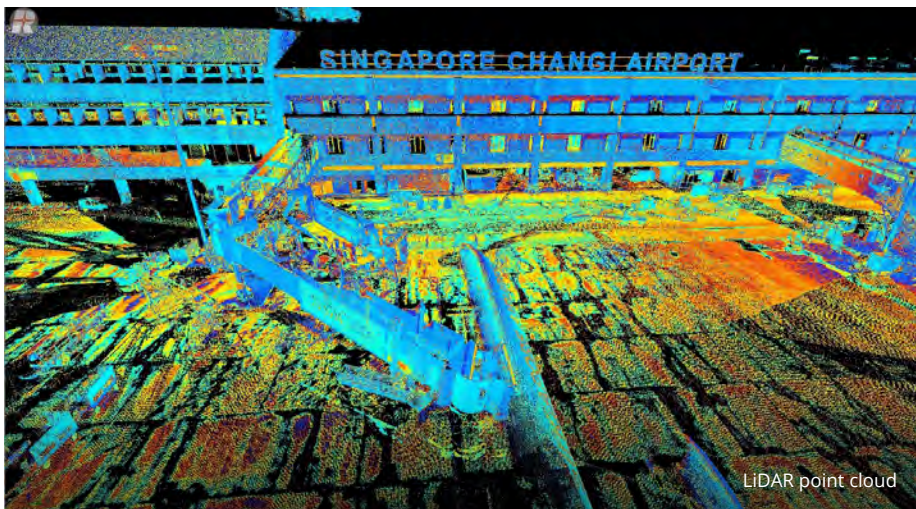


Survey Services: Mapping Spaces, Drawing Dreams

Besides raising land from the sea and sculpting shorelines, we help you map solid ground as well. Our land survey work provides the critical spatial information you need for design and construction decisions, to ensure the success of every site and infrastructure development.

Our team of highly experienced land surveyors and spatial technologists will meet your specifications, determining boundaries and setting out building sites with pin-point precision and state-of-the-art equipment and software.

our services



ENGINEERING SURVEY

From topographical surveys to setting out surveys and to as-built surveys, our team will meet all your engineering and construction survey needs.

PROPERTY BOUNDARY SURVEY

We determine property boundaries, calculate floor areas, conduct surveys and produce legal plans to ensure smooth property transactions.



Fusionopolis, Singapore

HYDROGRAPHIC SURVEY

We map the sea beds including coastlines and other submerged utilities.

MAPPING SURVEY

With drones/UAVs and land-based laser scanners and cameras, we ensure accuracy for your maps.

MONITORING SURVEY

We keep a close eye on any shifts of earth or buildings, with 24/7 monitoring and real-time alerts.

GLOBAL NAVIGATION SATELLITE SYSTEM (GNSS) SURVEY

We establish precise survey control network using latest GNSS survey equipments. This technology will also be used for engineering survey, where applicable.



Establish control point by GNSS Post Processing method



Health City Novena, Singapore

TUNNELLING SURVEY

Whether it is determining rail alignment or directing tunnel-boring machines, we have your tunnelling needs covered.

GEOGRAPHICAL INFORMATION SYSTEM

Our GIS professionals provide applications and advice to help national agencies and organisations harness the power of spatial data.

LAND MANAGEMENT SYSTEM

It offers proper administration of land and land tax. We do that, and much more, improving the collection of land and property revenue through a suite of software applications which includes automated land registration and property tax collection.



We deliver total urban and infrastructure solutions to support social and economic growth.

As one of Asia's leading consultancy powerhouses for urbanisation and infrastructure developments, we have a distinguished track record in shaping Singapore's urban and industrial landscape over the last 50 years.

Our multi-disciplinary team of specialists provides one-stop complete value chain consultancy services harnessed through years of successfully completing a wide array of projects in more than 200 cities in over 50 countries worldwide. We have designed over a million homes in Singapore, completed master plans for over 30 countries and planned more than 100 industrial parks worldwide.

With the addition of member companies - SMEC, Robert Bird Group, KTP, Sino-Sun and AETOS, we now have a combined global workforce of over 13,500 employees in over 120 offices across 40 countries globally.

our global footprint



168 Jalan Bukit Merah #01-01 Connection One Singapore 150168
enquiry@surbanajurong.com T +65 6248 1288

www.surbanajurong.com

Copyright © December 2017 Surbana Jurong Private Limited. All rights reserved.